



**AECE CONSULT  
SDN BHD**

**(REG NO. 1488091-W)**



# COMPANY OVERVIEW

AECE CONSULT SDN BHD is a professional engineering consultancy firm specializing in civil and structural engineering services. Evolving from Associate Engineers Consulting Engineer, the company continues to uphold a strong commitment to quality, innovation, and technical excellence in every project undertaken.

Founded by Ir. Chok Kai Kuang, a registered Professional Engineer with over 31 years of experience since 1988, AECE CONSULT SDN BHD builds on a legacy of trusted engineering practice.

With a focus on delivering innovative, safe, and sustainable engineering solutions, AECE CONSULT SDN BHD strives to support clients in achieving their project goals with precision, reliability, and integrity.



# VISION AND MISSION

## VISION

To be “**salt and light**” in engineering industry

“Whatever you do, work at it with all your heart as working for the Lord”



## MISSION

- Uphold the highest **ethical** standards committing to integrity, transparency and accountability
- Promote **sustainability** and stewardship by promoting practices that benefit both current and future generations
- Cultivate a **positive** workplace culture that can illuminate the good in others and guide team toward a shared, positive vision
- Engage stakeholders to **serve** the under privileged by considering social impact and prioritize safety globally
- Commit to continuous learning and **growth** applying values to reflect purpose to improve life for all

“Put them into practice is like a wiseman who built his house on the rock”

# OUR GOAL



Our goal is to deliver the highest level of personalized and professional service, where the client's requirements, interests, and cost-effective design solutions are our top priorities.

We are committed to providing dedicated attention throughout every stage of a project—from detailed design and planning to successful implementation.

# SERVICES



## **(A) STRUCTURAL CONSULTANCY WORKS**

Building and complexes, housing schemes, high-risk building, condominiums, prefabricated low-rise and high-rise flats, light industrial factory schemes, steel structures, bridges, box-culverts, retaining wall, anchored grouting, ground and elevated reservoirs, etc.

# SERVICES

## **(B) CIVIL ENGINEERING CONSULTANCY WORKS**

Roadworks, earthworks, drainage and irrigation works, water supply, sewerage, earth- stabilization works, geotechnical and foundation engineering works etc.



# SERVICES



## **(C) GEOTECHNICAL WORKS**

Foundation design, retaining wall design, slope stability analysis, ground settlement prediction, soil compaction and replacement, grouting and soil stabilization, ground treatment for soft soil areas, ground movement and settlement monitoring, geotechnical factual report

# SERVICES

## (D) SPECIALITY

- Renovation – Demolition and rebuilding works, reinforcement and structural strengthening
- Aluminium and glass – Structural aluminium framing and support systems, load analysis and structural performance under wind load
- ESCP – Erosion and sediment control measures for master development and quarry, stormwater management, soil loss estimation and sediment yield
- Steel - Design of steel structures, load analysis, structural stability, steel structural design calculations, structural analysis reports



# SERVICES

## (E) ENGINEERING SUPPORT

- EIA - Environmental Impact Assessment for new development of housing scheme, golf courses, expressway, industrial estates, quarry etc.
- RSA – Audit reports, annotated site plans, risk classification and mitigation measures
- Architecture – Design coordination, consultancy services, construction supervision
- Interior Design – Conceptual and space planning, furniture, fixtures & equipment (FF&E) design, lighting, detailed interior layout, sanitary and plumbing layout



# PROFESSIONAL REGISTRATION



Companies Commission of  
Malaysia (SSM)

Board of Engineers  
Malaysia (BEM)

Ministry of Finance (MOF)

# DIRECTOR

## **IR CHOK KAI KUANG**

C16172

*B.Sc. (Hons) Civ. Eng. (UK)*

*P.Eng. F.I.E.M, MACEM*



## **IR SIA MUN HONG**

C119368

*B.Eng (Civil) UPM.*

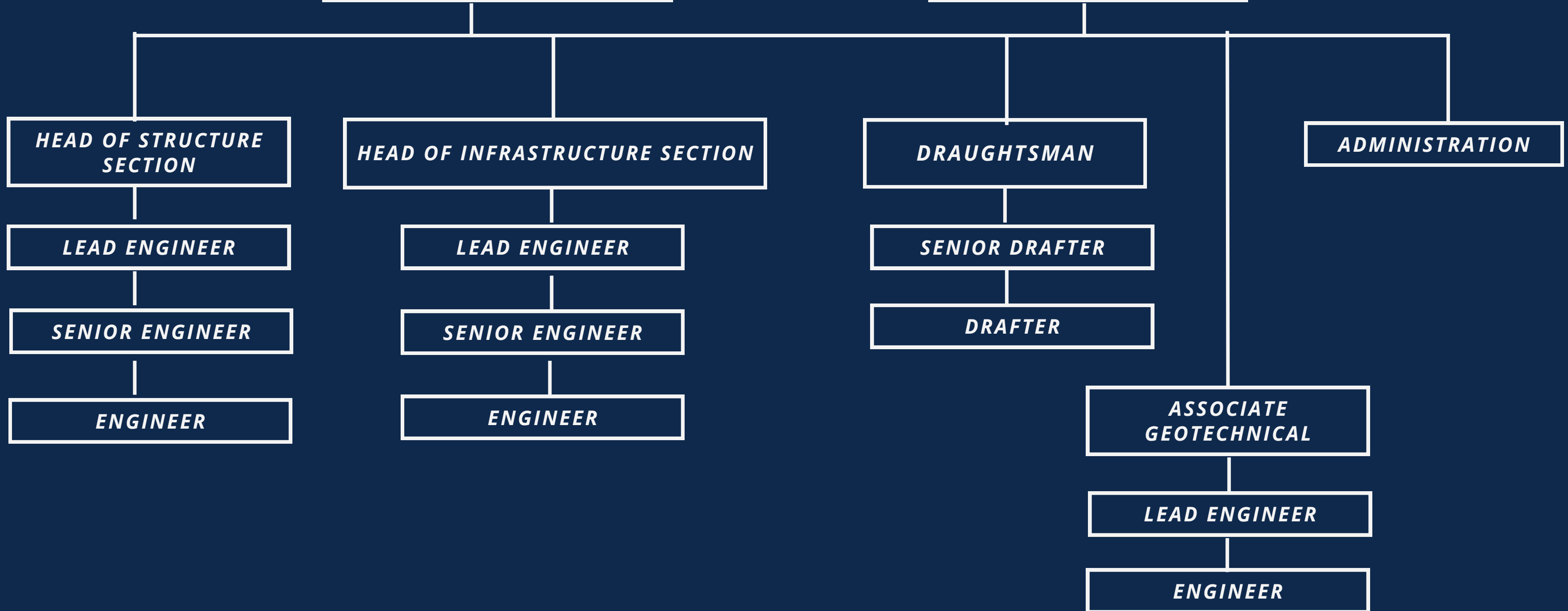
*PEPC. MIEM*



# ORGANIZATION CHART

*Ir. CHOK KAI KUANG*  
*C 16172*  
*BSc. (Hons) Civil Eng. (UK),*  
*P.Eng., FIEM*

*Ir. SIA MUN HONG*  
*C 119368*  
*B.Eng (Civil) UPM. PEPC.*  
*MIEM*



# SOFTWARE & LICENSE

A) STRUCTURE DESIGN - ESTEEM 9 & 10, PROTA, TEKLA,

B) INFRASTRUCTURE - AUTO CIVIL 3D, MES INFRA SUITE

C) DRAFTING AND BIM - AUTODESK REVIT STRUCTURE, AUTOCAD 2025

# PROJECT LIST



- **MAIN  
INFRASTRUCTURE**
- **TOWNSHIP**
- **HIGHRISE**
- **FACTORY /  
WORKSHOP**



**TOWNSHIP**

# SIME DARBY PROPERTY



- Proposed 76 Units of 20' x 65' (Phase 7A) Double Storey Terrace Houses (16 Mil).
- Proposed 113 Units of 20' x 70' (Phase 7B) Double Storey Terrace Houses (26 Mil).
- Proposed 145 Units of 20' x 65' (Phase 12) Double Storey Terrace Houses (31 Mil).

**AINSDALE, SEREMBAN**

# SIME DARBY PROPERTY



- Proposed 324 Units Double Storey Link Houses (20' x 70') at Phase A9 (74 Mil).
- Proposed 408 Units Double Storey Link Houses (20' x 70') at Phase A10 (120 Mil).

**SERENIA CITY, SEPANG**

# SIME DARBY PROPERTY



- **Proposed Completion of 129 units Double Storey Terrace House at Elmina Valley A, Selangor. (42 Mil)**
- **Proposed Completion of 149 units Double Storey Terrace House at Elmina Valley B, Selangor. (45 Mil)**

**ELMINA CITY, SHAH ALAM**

# SIME DARBY PROPERTY



- Proposed 74 units double storey link house at Phase G3C, Elmina East (36 Mil)
- Proposed 67 units double storey link house at Phase G3B, Elmina East (29 Mil)

**ELMINA CITY, SHAH ALAM**

# SIME DARBY PROPERTY



**Proposed 26 Unit Double Storey  
Link House, Fasa 2 SI-2C3  
(16 Mil)**

**SAUJANA IMPIAN, KAJANG**

# SIME DARBY PLANTATION



**Proposed Construction and  
Completion of**

**a) 1 Block 12 Unit Double Storey Vila**

**b) 1 Block 4 Unit Single Storey Vila**

**and Renovation of the Existing Building  
(65 Mil)**

**PORT DICKSON, NEGERI SEMBILAN**

# SP SETIA BERHAD



**Proposed Completion of 93 Unit Double  
Storey Terrace House  
RT3-A&B (22' x 70')  
(23 Mil)**

**SETIA ALAM, SHAH ALAM**

# SP SETIA BERHAD



- Proposed Completion of 62 Unit Double Storey Terrace House RT3-C&D (22' x 70') (15 Mil)
- Proposed Completion of 62 Unit Double Storey Terrace House RT3-E&F (22' x 70') (15 Mil)

**SETIA ALAM, SHAH ALAM**

# SP SETIA BERHAD



**Proposed Completion of 75 Unit Double Storey (20' x 65') at Lot PT 35809 - PT 35883, Seksyen U13, Setia Alam, 401750 Shah Alam, Selangor Darul Ehsan (13 Mil)**

**SETIA ALAM, SHAH ALAM**

# UEM SUNRISE



**Proposed Development on 448.61  
acres Agricultural Land on Lot 2168,  
Mukim Semenyih, Daerah Hulu Langat, Selangor  
Darul Ehsan  
(32 Mil)**

**SERENE HEIGHTS, SEMENYIH**

# UEM SUNRISE



- Proposed Completion of 72 Unit Double Storey Terrace House (Phase 1J) and Water Supply Interim Phase 1F, 1H & 1J (24.5 Mil)
- Proposed Completion of 72 Unit Double Storey Terrace House (Phase 1E) (24 Mil)

**SERENE HEIGHTS, SEMENYIH**

# WORLDWIDE HOLDINGS BERHAD



**Proposed Completion of 107 unit  
2 storey Semi D and Bungalow at  
Bukit Bandaraya, Selangor.  
(65 Mil)**

**BUKIT BANDARAYA, SHAH ALAM**

# WORLDWIDE HOLDINGS BERHAD



**Proposed Development of Phase 5  
176 Units of Double Storey Terrace  
House (22' x 70'), Alam Perdana  
(39 Mil) - Construction Stage**

**ALAM PERDANA, KUALA SELANGOR**

# WORLDWIDE HOLDINGS BERHAD



**Proposed Development of  
8.20 Acres Residential Land  
at Phase 8B & 8.15  
Acres of Phase 8C,  
Bukit Bandaraya  
(57 Mil) - Construction Stage**

**BUKIT BANDARAYA, SHAH ALAM**

# **BANDAR SUBANG SDN BHD**



- **Proposed Completion of 32 units Double Storey Terrace House at Bukit Cerakah, Selangor (10 Mil)**
- **Proposed Completion of 23 units Double Storey Terrace House, Phase 5E, Saujana Impian at Kajang, Selangor (7 Mil)**

**KAJANG, SELANGOR**

# IOI PROPERTIES



## IOI CITY MALL, PUTRAJAYA

- **Proposed Handing Over of Water Supply for Mix Development, Sepang, Selangor (RM 350,000)**
- **Proposed Construction and Completion of 66ft road at lot 119164 and lot 119157, Mukim Dengkil, Daerah Sepang (1.8 Mil) - Design Stage**

# KITACON SDN BHD



**Proposed Construction and  
Completion of Phase 1A  
Comprising of 143 Unit of Single  
Storey Terrace (20' X 70'),  
Pekan Telok Datok,  
Daerah Kuala Langat  
(80 Mil)**

**KUALA LANGAT, SELANGOR**



***HIGHRISE***

# SP SETIA BERHAD



Proposed Completion of 2 blocks "Rumah SelangorKU" 422 units at Setia Alam, Selangor. (42 Mil).

**SETIA ALAM, SHAH ALAM**

# BANDAR SUBANG SDN BHD



Proposed Completion " Rumah SelangorKU" 430 units at Mukim Kajang, Selangor.  
(85 Mil) - Planning Stage

**KAJANG, SELANGOR**



**FACTORY /  
WORKSHOP**

# UPHA PHARMACEUTICAL MFG(M) SDN BHD



Proposed 2 Storey Pharmaceutical  
Factory, Bandar Baru Bangi  
(9 Mil)

**BANGI, SELANGOR**

# EDARAN OTOMOBIL NASIONAL (EON) SDN BHD



Proposed Showroom / Workshop  
at Larkin Industrial Area,  
Johor Bahru  
(2.5 Mil)

**LARKIN, JOHOR**



# MAIN INFRA STRUCTURE

# CYBERVIEW SDN BHD



**Raja Haji Fisabilillah Mosque  
(60 Mil)**



**CYBERJAYA**

# CYBERVIEW SDN BHD



**Hewlett Packard Global IT Hub  
(233 Mil)**



**CYBERJAYA**

# ISKANDAR INVESTMENT BERHAD



**Educocity Sports Complex,  
Johor (70.2 Mil)**

**NUSAJAYA, JOHOR**

# SIME DARBY PROPERTY, NILAI IMPIAN



Proposed Integrated Township  
Development of Sungai Sekah  
(127 Mil)

**SUNGAI SEKAH, NILAI**

# OUR CLIENT

